

Hornet 565

Parallel robot ideal for use in the food and beverage, pharmaceutical, and healthcare industries



- Ethernet capability to control the robot through the familiar programming language (IEC 61131-3) of Machine Automation controller NJ/NX series
- The amplifier and controller built into the robot reduces the number of cables
- Tracks up to a conveyor speed of 1.4 m/s
- Designed with a high payload to support multi-hand (multi-picking)
- Supports fast Pick & Place on a fast conveyor
- Helps reduce mounting cost and robot vibration
- Maximum working diameter 1,130 mm
- Working height 425 mm
- Maximum payload 8 kg
- Weight 52 kg
- Protection IP65 *2

Specifications

Product name		Hornet	
		565	
Size		3 axes	4 axes
Type			
Model		1720□-45600	1720□-45604
Number of axes		3	4
Mounting		inverted	
Working volume	X,Y axis (stroke)	1130 mm	
	Z axis (stroke)	425 mm	
	theta axis (rotation angle)	-	±360°
Maximum Payload		8 kg	3 kg
Repeatability		±0.10 mm	
Cycle times, sustained (at 20°C ambient)	Payload 0.1 kg	0.32 s *1	0.35 s *1
	Payload 1.0 kg	0.34 s *1	0.37 s *1
	Payload 3.0 kg	0.38 s *1	0.42 s *1
Power Requirements		24 VDC: 6 A 200 to 240 VAC: 10 A, single-phase	
Protection	Base	IP65 *2	
	Platform	IP67	
Environment Requirements	Ambient Temperature	1 to 40°C	
	Humidity Range	5 to 90% (non-condensing)	
Weight		52 kg	
Basic configuration	Controller	eAIB	
	On-board I/O (Input/Output)	12/8	
	Conveyor tracking input	2	
	RS-232C serial communications port	1	
	Programming environment	ACE, PackXpert, PLC	
	ePLC Connect	Yes	
Connectable controller *3		ePLC I/O Yes	
		SmartController EX, NJ/NX Series *4	

*1. Adept cycle, in mm (25/305/25)

*2. IP67: arms and platform, IP65: underside of robot, IP20: topside of robot, IP65: topside of robot (with option cover)

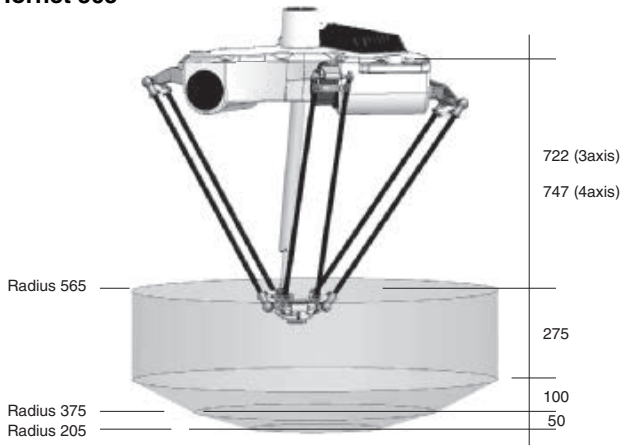
*3. Choose a controller to suit your application.

*4. The robot version 2.3.C is required to connect with the NX/NJ Series.

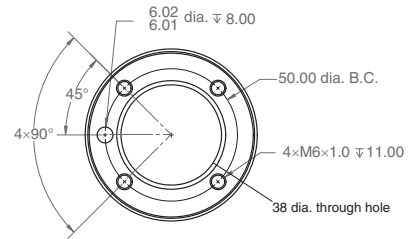
Dimensions

(Unit: mm)

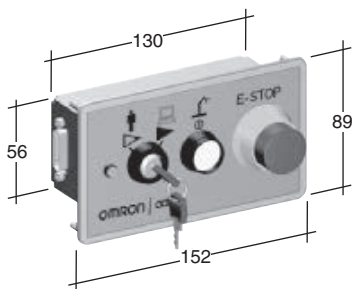
Hornet 565



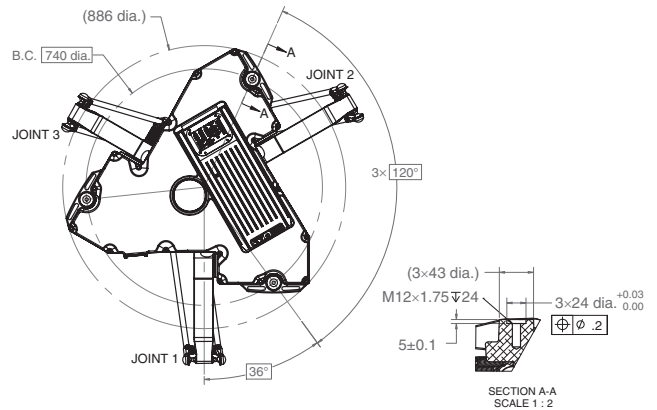
Flange



Front panel



Footprint



Robot Parts Code and Bundled Accessories

Type	Hornet	Hornet Add-On
Hornet 565 3Axis	17201-45600	17203-45600
Hornet 565 4Axis	17201-45604	17203-45604
Overview	Robot + eAIB with fully integrated controller	Robot + eAIB required connection cables
Purpose	Typical for use in single robot system	Typically added to systems with an existing SmartController EX to create multi-robot systems
Bundled Accessories	<ul style="list-style-type: none"> XSYS cable with jumpers, 2m/6ft (13323-000) Front panel kit (90356-10358) 	<ul style="list-style-type: none"> XSYS cable with jumpers, 2m/6ft (13323-000) XSYS cable, 5m/15 ft (11585-000) DB9 splitter (00411-000) 1394 latch cable, 5m/15 ft, 13632-045) eV+ license to connect to controller (14529-103)

Note: OMRON also provides other types of model. Ask your OMRON sales representative for details.

OMRON Corporation Industrial Automation Company
Tokyo, JAPAN

Contact: industrial.omron.eu

Regional Headquarters

OMRON EUROPE B.V.
Sensor Business Unit
Carl-Benz-Str. 4, D-71154 Nufringen, Germany
Tel: (49) 7032-811-0/Fax: (49) 7032-811-199

OMRON ELECTRONICS LLC
2895 Greenspoint Parkway, Suite 200
Hoffman Estates, IL 60169 U.S.A
Tel: (1) 847-843-7900/Fax: (1) 847-843-7787

OMRON ASIA PACIFIC PTE. LTD.
No. 438A Alexandra Road # 05-05/08 (Lobby 2),
Alexandra Technopark,
Singapore 119967
Tel: (65) 6835-3011/Fax: (65) 6835-2711

OMRON (CHINA) CO., LTD.
Room 2211, Bank of China Tower,
200 Yin Cheng Zhong Road,
PuDong New Area, Shanghai, 200120, China
Tel: (86) 21-5037-2222/Fax: (86) 21-5037-2200

Authorized Distributor:

© OMRON Corporation 2016 All Rights Reserved.
In the interest of product improvement,
specifications are subject to change without notice.

Cat. No. I264E-EN-01